



Johns Hopkins Individualized Health Initiative (Hopkins *in*Health)

Darcy Phelan-Emrick, DrPH, MHS

August 27, 2014

Opportunities For You Through *inHealth*

Support your research through pilot funding

Help you develop partnerships with JHMI clinical investigators

Assist you with accessing JHMI data

Provide you with technical assistance for challenges of conducting health-related research (e.g., bioethics)

Who We Are

A collaboration between the University, the Johns Hopkins Health System, and the Applied Physics Laboratory

Leadership

Director – Scott Zeger (BSPH)

Co-Director – Mary Cooke (JH HealthCare)

Co-Director – Ken Pienta (SOM)

Program Director – Darcy Phelan-Emrick (BSPH)

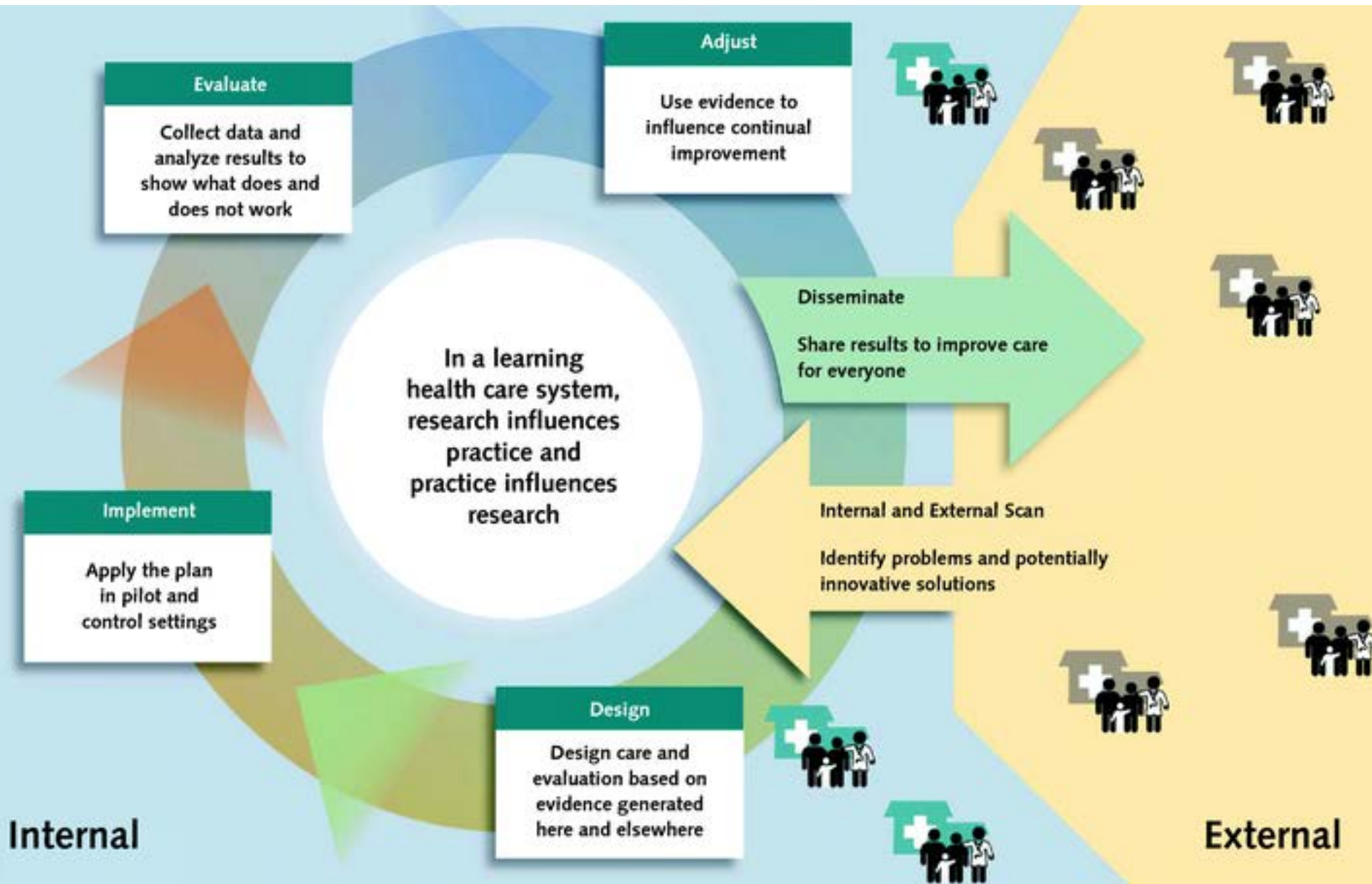
Steering Committee and Oversight Committee

What We Do

Promoting the *intelligent* use of *information* to *individualize* and *integrate* health care

Providing the right care to the right person at the right time

Utilizing a broad array of data to provide each person with integrated, customized care that is effective, safe, preventively focused, affordable



Example: Autoimmune Disease Trajectory

Scleroderma (chronic autoimmune disease)
- Progression varies widely between patients

Collaboration between machine learning scientist (Suchi Saria) and clinical investigators (Laura Hummers, Antony Rosen) on data analysis

20 years longitudinal data for > 3,100 patients

Awarded National Science Foundation funding

Example: Cystic Fibrosis Measurement

Cystic Fibrosis (genetic disease, affects lungs)
- Highly variable disease trajectory

Archaic sweat test as “gold standard” for > 50 yrs

Collaboration between INBT investigator (Peter Searson) and clinical investigator (Garry Cutting) to develop wearable device to replace sweat test

Hiring of post-doctoral fellow

Pilot Funding Process

RFA to be released within 3 months

Phase 1

- Award 8 pilot applicants with \$50K for 8 months
- Pilots that meet their defined goal at the end of 8 months receive \$25K for additional 4 months
- Potential funding per pilot = \$75K over 1 year
- Pilots that successfully complete Phase 1 are eligible to apply for continued funding (Phase 2)

Pilot Funding Process (continued)

Phase 2

- Award 3-5 pilot applicants with \$100K - \$150K for 12 months
- Requirements
 - Implementation of pilot solution at Johns Hopkins by end of Phase 2
 - Submission of external funding application

Total potential funding through Phases 1 and 2 = \$175K - \$225K over 2 years

How To Get Involved

Apply to become a member of the Hopkins *inHealth* community

- Visit <http://hopkinsinhealth.jhu.edu/>
- Click “Join Us” and follow instructions

Benefits of Hopkins *inHealth* membership

- Eligibility for forthcoming pilot funding
- Updates on research findings, news, etc.
- Development of partnerships/access to data

Thank You

Hopkins *in*Health
<http://hopkinsinhealth.jhu.edu/>

Click “Join Us” to apply for membership

Darcy Phelan-Emrick
410-502-0014
dphelan@jhu.edu